

AMT Surgical Line TLC® Retractors



TLC® Retractor Stays

Order #	Description	
TLC090	3 mm Sharp	
TLC110	5 mm Sharp	
TLC100	5 mm Blunt	
TLC150	12 mm Blunt	
TLC203	20 mm Rake	

Stays are available in 4, 8, and 50 packs.
The 20 mm 3-Finger Rake is available in a 4 pack.
4 and 8 packs: Stays are assembled in a tray and pouched (sterile).
50 pack: Stays are individually pouched (sterile).

Wilson™ Enhanced Retractor Systems

Order #	Description	Quantity
TLC5011	Retractor Frame, TLC900	1
	12 mm Blunt Stay	6
	5 mm Sharp Stay	1
	Small Deavers (17 mm Wide)	2
	20 mm 3-Finger Rake	2
	Penile Elevation Strap	1

Order # **TLC5013**
Description: All TLC5011 contents except TLC900 retractor frame.

TLC® Urogynecology Retractor System

Order #	Description	Quantity
TLC5015	Retractor Frame, TLC200	1
	5 mm Sharp Stay	8

Remora® Smoke and Fluid Evacuators

Order #	Description
ST9000*	Remora® – Smoke and Fluid Evacuator 1 Evacuator 1 Needle Tip Adapter 1 Pinch Clamp
ST9100*	Remora® Micro – Smoke and Fluid Evacuator 1 Evacuator 1 Needle Tip Adapter

*Remora® kits are packaged 10/box (sterile) | Electrosurgical unit is not included.

Wilson™ Retractor Systems

Order #	Description	Quantity
TLC5042	Retractor Frame, TLC200	1
	12 mm Blunt Stay	6
	5 mm Sharp Stay	1
	Penile Elevation Strap	1

Order # **TLC5040**
Description: All TLC5042 contents except TLC200 retractor frame.

TLC® Colorectal Retractor System

Order #	Description	Quantity
TLC5017	Retractor Frame, TLC700	1
	5 mm Sharp Stay	8



TLC® Retractors + Stays
Self-Retaining Retractor System

Wilson™ Retractor System
for Urological Surgeries

Remora®
Smoke + Fluid Evacuators

For a complete list of products, visit us at www.AppliedMedical.net
800 869 7382 | CS@AppliedMedical.net | ICS@AppliedMedical.net



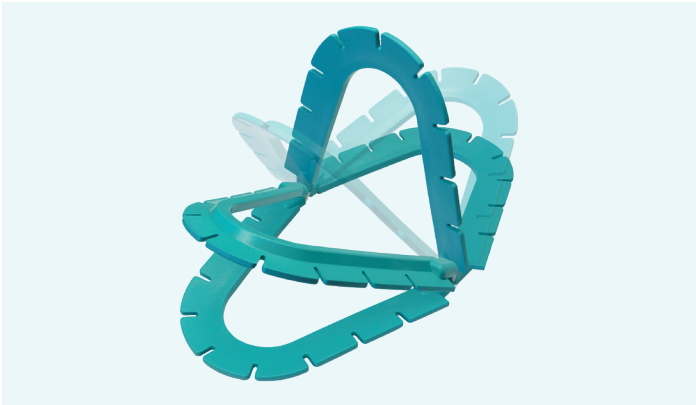
Applied Medical Technology, Inc.
8006 Katherine Boulevard
Brecksville, OH 44141
www.AppliedMedical.net
An ISO 13485 Registered Company
Made in USA



TLC[®]

Self-Retaining Retractor Systems

The TLC[®] Retractor System allows surgeons to retract and secure delicate soft tissues for a wide variety of procedures. The self-retaining design of the TLC[®] system creates an organized surgical site which allows the surgeon to focus on the procedure and provides O.R. staff the freedom to perform other tasks. The continuous, stable retraction provided by TLC[®] Stays eliminates the need to unnecessarily adjust stay positioning during a procedure.



Faster Deployment

Flexible hinges adjust to the patient's anatomy in an instant. There are no thumbscrews to adjust!



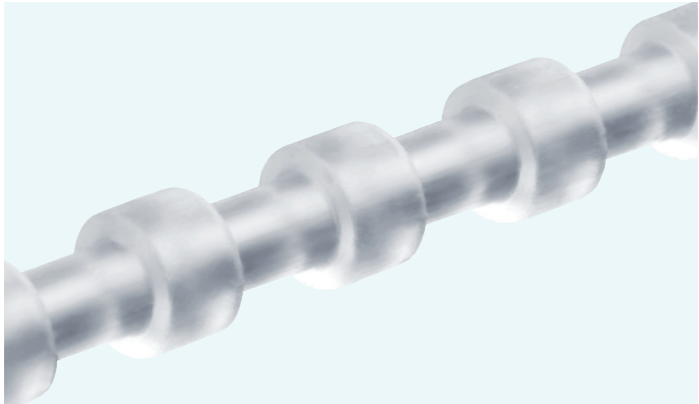
Eliminate Slippage

TLC[®] ribbed stays provide a secure fit, virtually eliminating slippage and the risk of popping out.



Improve Field of Vision

Low profile design allows for greater visualization of the surgical site.



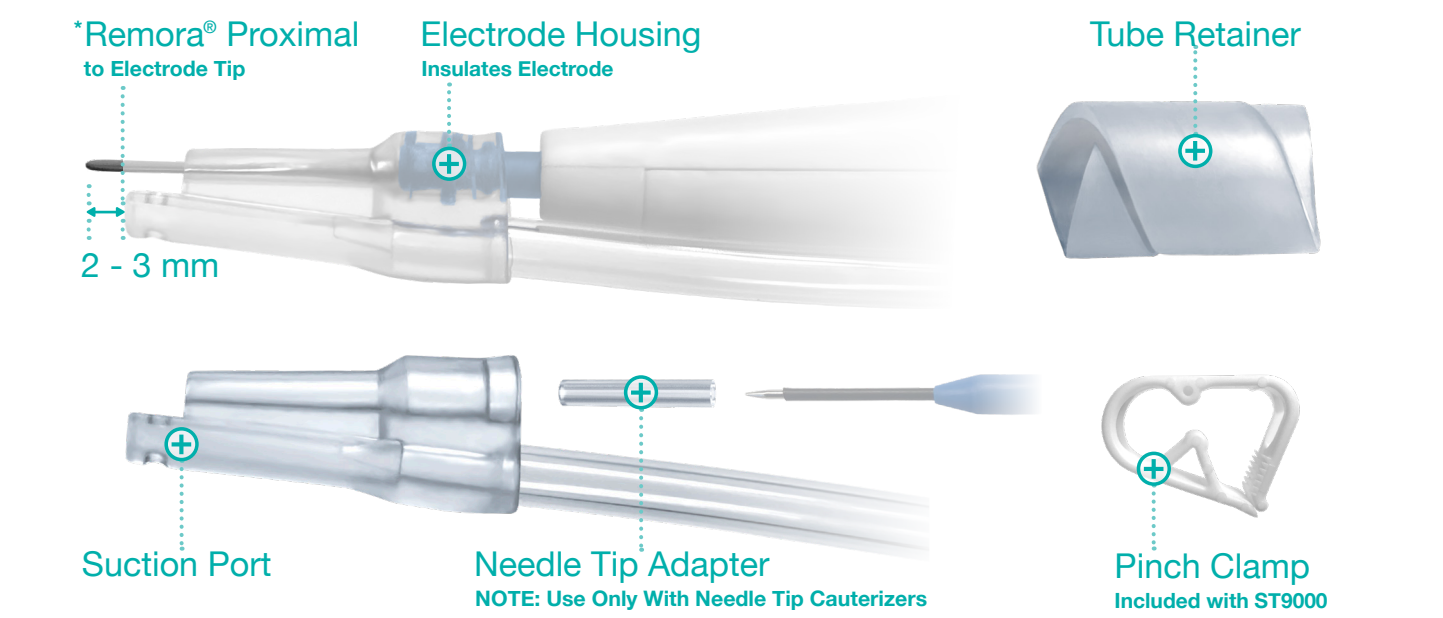
Increase Control

Uniform tension allows better control of the tissue as the retractor is precisely positioned around the surgical site.

Remora[®]

Smoke + Fluid Evacuation System

The Remora[®] enables simultaneous removal of smoke and fluid from the electrosurgical site. With a minimalist form, the Remora[®] preserves the surgeon's field of vision and their ability to navigate tight spaces while operating. The Remora[®] is compatible with nearly all electrosurgical pencils and features a universal suction adapter that plugs into most O.R. suction sources. A Universal Design means NO capital equipment is required to incorporate the Remora[®] into your surgical smoke evacuation program. The Remora[®] comes in a standard and a micro configuration to accommodate a variety of surgical procedures. The Remora[®] is an excellent tool to increase efficiency and assist in keeping the operating room free of toxic surgical smoke.



Smoke Removal

- Improved safety from carcinogens + other toxins in O.R.
- Simultaneous smoke + fluid removal
- Improved visibility
- Unimpeded maneuverability
- Insulates the pencil tip
- Instantaneous removal at point of origin
- Compliant material gentle on delicate tissues
- OSHA and AORN smoke evacuation compliant

*NOTE: The Needle Tip Adapter should not extend more than 3 mm past the suction port for optimal smoke and fluid removal.

